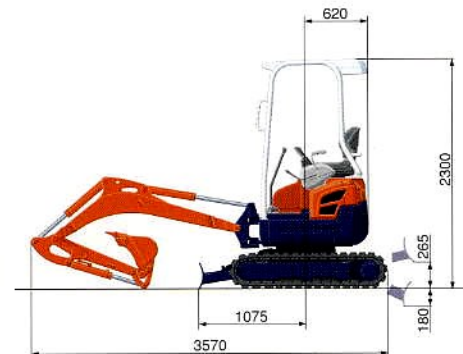
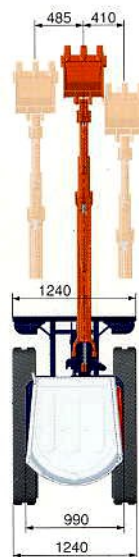
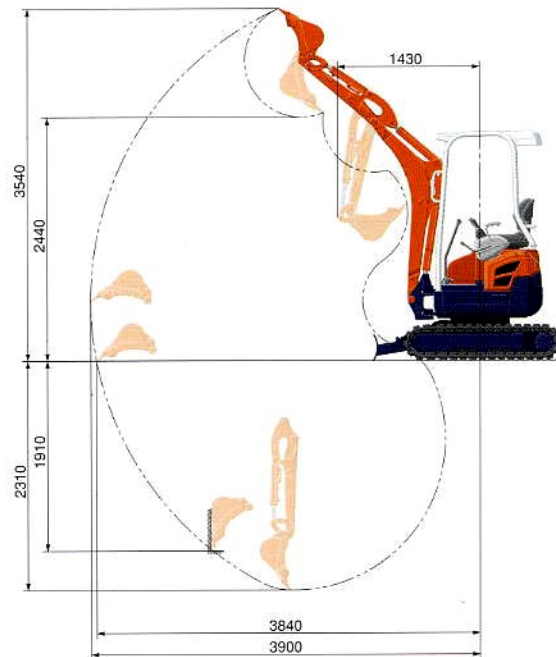


# SPECIFICATIONS

# WORKING RANGE

\*Rubber shoe type

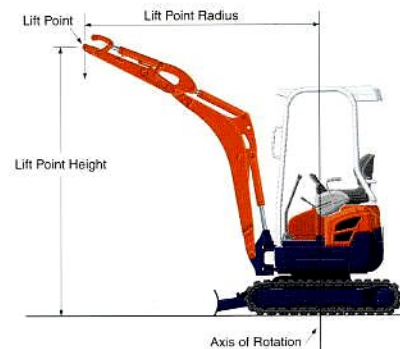
Machine weight	kg	1600		
Bucket capacity, std. SAE/CECE	m <sup>3</sup>	0.04		
Bucket width	with side teeth	mm	450	
	without side teeth	mm	400	
Engine	Model	D782		
	Type	Water cooled		
	Output ISO9249	PS/rpm	13/2300	
		kW/rpm	9.6/2300	
	Number of cylinders	3		
	Bore x Stroke	mm	67 x 73.6	
Displacement	cc	778		
Overall length	mm	3570		
Overall height	mm	2300		
Swivelling speed	rpm	8.7		
Rubber shoe width	mm	230		
Tumbler distance	mm	1230		
Dozer size (width x height)	mm	990/1240x260		
Hydraulic pumps	P1, P2	Variable displacement pump		
	Flow rate	ℓ/min	16.6+16.6	
	Hydraulic pressure	MPa (kgf/cm <sup>2</sup> )	21.6	
	P3	Gear pump		
	Flow rate	ℓ/min	10.4	
	Hydraulic pressure	MPa (kgf/cm <sup>2</sup> )	18.6	
Max. digging force	Arm	kN (kgf)	8.8 (900)	
	Bucket	kN (kgf)	15.2 (1550)	
Boom swing angle (left/right)	deg	65/58		
Auxiliary circuit	Flow rate	ℓ/min	27	
	Hydraulic pressure	MPa (kgf/cm <sup>2</sup> )	18.6	
Hydraulic reservoir	ℓ	23		
Fuel tank capacity	ℓ	18		
Max. travelling speed	Low	km/h	2.2	
	High	km/h	4.3	
Ground contact pressure	kPa	26.4		
Ground clearance	mm	160		



Unit: mm

# LIFTING CAPACITY

Lift Point Height	Lifting point radius (2m)			Lifting point radius (3m)		
	Over-front		Over-side	Over-front		Over-side
	Blade Down	Blade UP		Blade Down	Blade UP	
1.5m	4.5 (0.46)	4.0 (0.41)	3.7 (0.38)	3.6 (0.37)	2.1 (0.22)	2.0 (0.20)
1.0m	6.2 (0.63)	3.8 (0.39)	3.5 (0.36)	3.8 (0.38)	2.1 (0.21)	2.0 (0.20)
0.5m	6.9 (0.70)	3.6 (0.37)	3.3 (0.34)	3.8 (0.39)	2.0 (0.21)	1.9 (0.19)
0m	6.6 (0.67)	3.5 (0.36)	3.3 (0.33)	3.6 (0.37)	2.0 (0.20)	1.9 (0.19)



Please note:

\* The lifting capacities are based on ISO 10567 and do not exceed 75% of the static tilt load of the machine or 87% of the hydraulic lifting capacity of the machine.

\* The excavator bucket, hook, sling and other lifting accessories are not included on this table.

\* Working ranges are with Kubota standard bucket, without quick coupler.

\* Specifications are subject to change without notice for purpose of improvement.